

THE OPEN UNIVERSITY OF SRI LANKA  
 DIPLOMA IN INDUSTRIAL STUDIES  
 FINAL EXAMINATION - 2011/2012  
 TTI3240 PATTERN CONSTRUCTION  
 DURATION - THREE HOURS



DATE: 22<sup>nd</sup> FEBRUARY 2012

TIME: 0930 TO 1230 HOURS

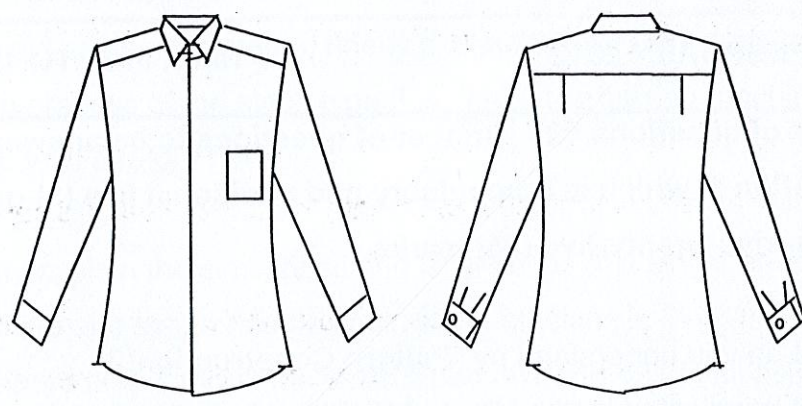
Total Number of questions = 08 Number of questions to be answered = 06

Answer Question 1, which is compulsory and additional five (5) questions.

Question 1 carries twenty-five (25) marks.

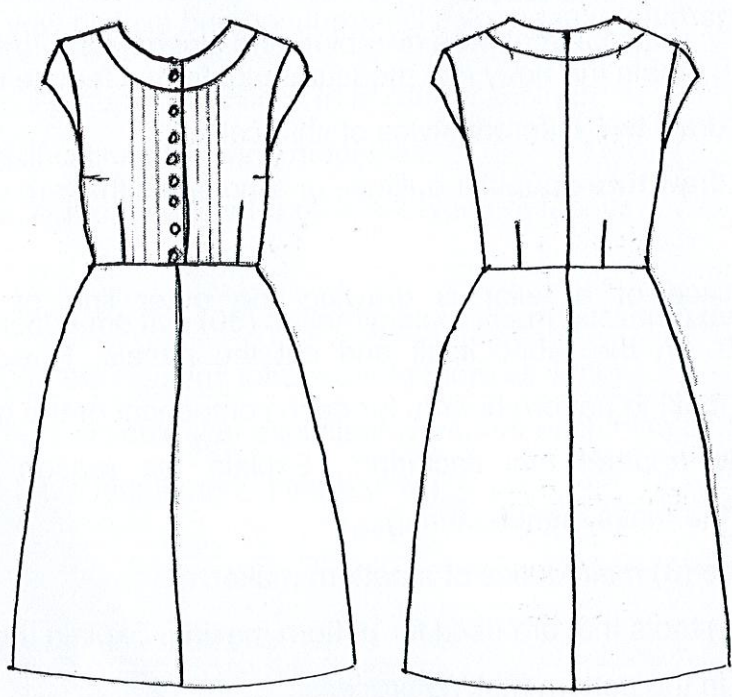
- (1) (a) What do you understand by "Pattern Construction"?
- (b) What is indicated by the "Grain Line" in a drafted pattern?
- (c) How do you achieve 3 dimensional body shapes with 2 dimensional flat patterns?
- (d) Name three (3) possible style changes that can be used to achieve different appearance for a gent's trouser
- (e) Sketch and name three (3) different types of pleats which can be applied for ladies skirts.
- (f) Name and indicate in a diagram six types of darts that can be seen in women's wear bodice block.
- (g) For which garment seat angles is introduced and explain why?
- (h) How do you obtain the body rise measurement from a female body?
- (i) Name and draw **two** different styles of shirt collars.
- (j) Name and draw **three** popular outlines or silhouettes that are used in shirts.
  
- (2) (a) Usual practice of a tailor is drawing the outer line of the garment components on the fabric itself and cut the panels. However it is the practice of making pattern boards for each component of the garment in the mass scale apparel manufacturing,. Explain the reason of preparing patterns in the mass manufacturing. (4 Marks)
- (b) Explain three (3) main duties of a pattern maker. (6 Marks)
- (c) Write five (5) tools that are used for pattern making. Explain the use of these tools in the pattern making process. (5 Marks)

- (3) (a) A pattern can be constructed either by the method of pattern drafting or pattern manipulation. Explain these two methods of pattern construction. (6 Marks)
- (b) Following is a line drawing of a gent's shirt. Draw rough sketches of all the required pattern pieces for manufacturing this shirt. (6 Marks)

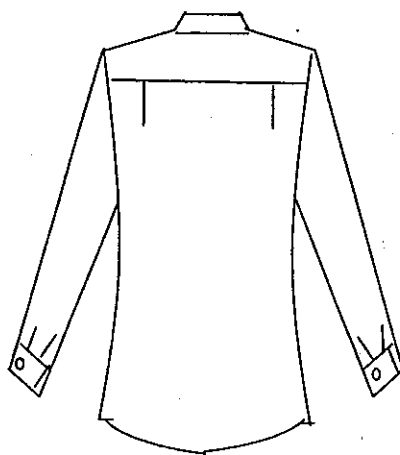


- (c) Explain the importance of mentioning pattern specifications in each and every pattern. (3 Marks)

- (4) (a) Following is a line drawing of a ladies dress. Draw rough sketches of the required pattern pieces and mention the pattern specifications for each pattern. (4 Marks)



- (b) Body measurements are one major requirement to construct patterns. What are the required body measurements to draft patterns for the above dress? (3 Marks)
- (c) With the help of rough sketches explain the method of taking four (4) measurements you mentioned in part (b). (8 Marks)
- (5) (a) What are the required measurements to draft the basic sleeve pattern for a ladies dress? (2 Marks)
- (b) Assuming that you are provided with the basic bodice front and back patterns, explain the method of constructing the basic sleeve pattern. Use rough sketches to explain your answer. (13 Marks)
- (6) Following sketch shows a back of the gent's tunic shirt with a back yoke. With the help of the given measurements explain the construction steps to develop the back pattern and the yoke pattern of this shirt. (15 Marks)



**Measurements:**

Half across back	= 19 cm
Natural waist length	= 42.5 cm
Full shirt length	= 78 cm
Chest	= 92 cm
Neck	= 38 cm

- (7) (a) What are the required measurements to draft patterns for a basic trouser?  
(3 Marks)
- (b) With the help of sketches explain the construction steps of basic trouser top pattern.  
(12 Marks)
- (8) (a) What are the different styles of garments discussed under children's wear?  
(3 Marks)
- (b) Explain the drafting procedure for a boy's shirt back pattern.  
(Children's wear) (12 Marks)